

SBCs AND INFRASTRUCTURE MAINTENANCE

*Anna Niska
Research Leader, VTI*



Cykelcentrum | vti


1

VTI?

Swedish National Road and Transport Research Institute

- an assignment-based authority under the Ministry of Infrastructure
- non-profit research institute
- founded in 1923
- applied, interdisciplinary research targeting all modes of transport

www.vti.se



2

VISION ZERO – A SAFE SYSTEM APPROACH

No one killed or seriously injured in road traffic
Shared responsibility: road users and system designers
Goal to 2020 (compared to the level in 2007)

- Number of killed: -50%
- Number of seriously injured: -25%

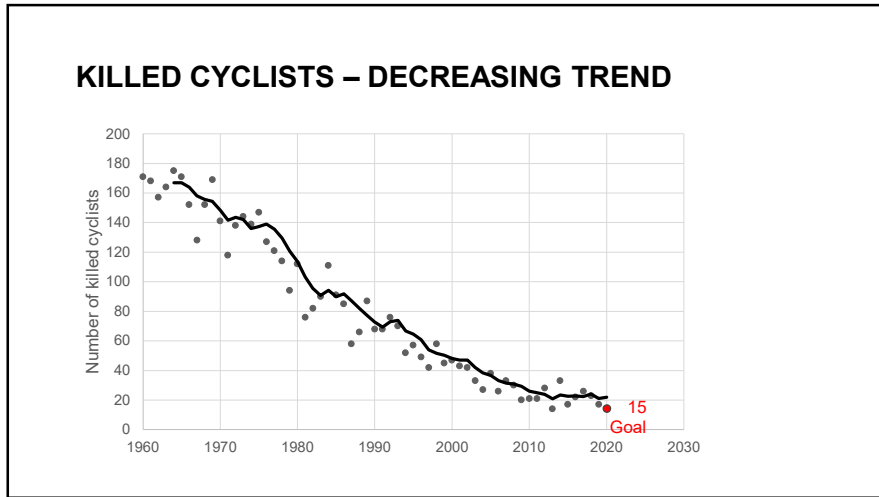


Photo: Hejdlösa bilder (left), Mikael Andersson (right)

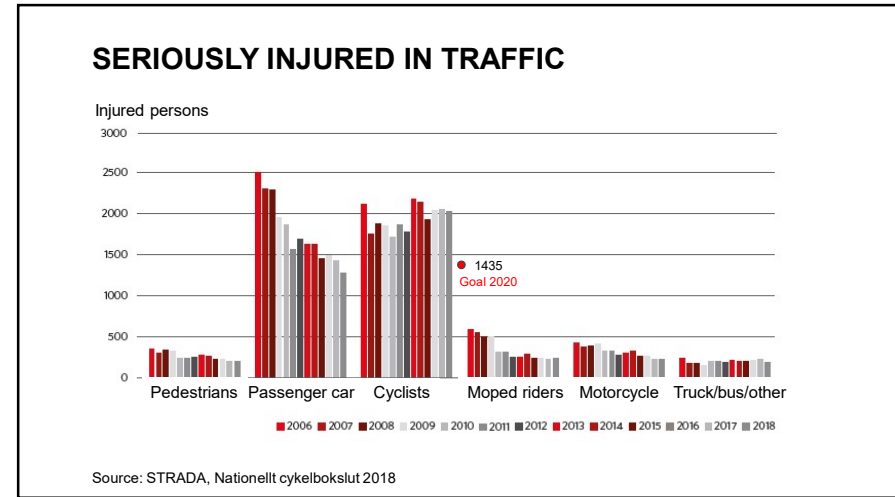
3



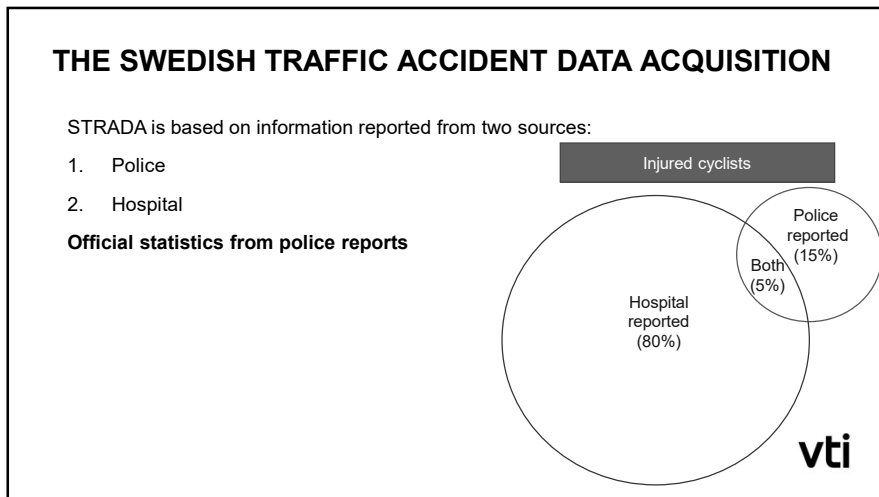
4



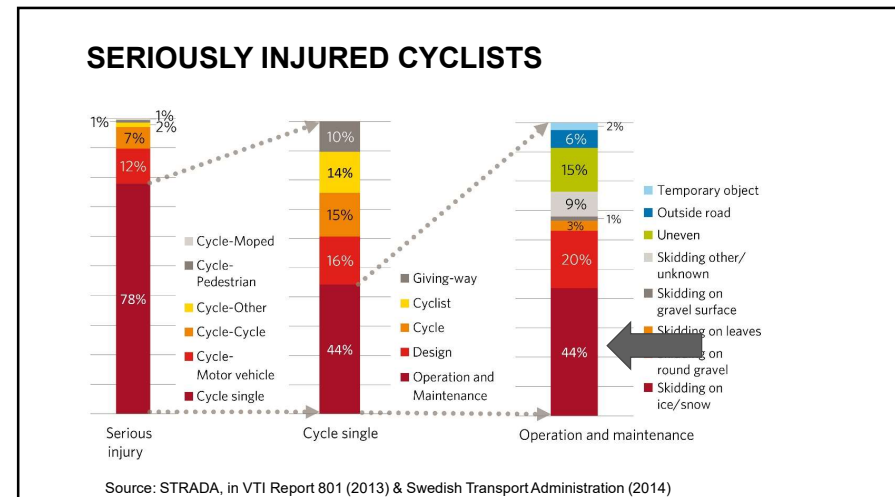
5



6



7



8

INCREASE CYCLING – EVEN IN WINTERTIME!



9

ICY CONITIONS



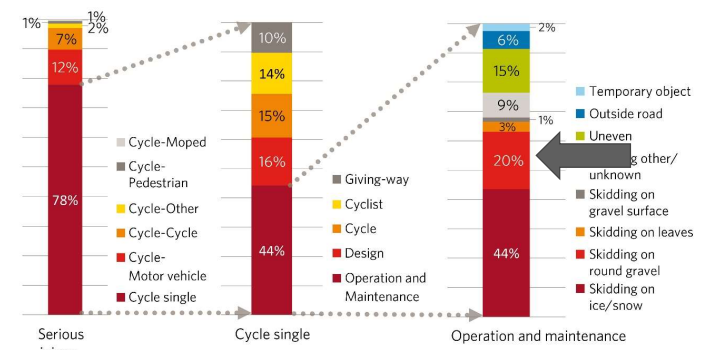
10

TRADITIONAL WINTER MAINTENANCE OF BIKE PATHS



11

SERIOUSLY INJURED CYCLISTS



Source: STRADA, in VTI Report 801 (2013) & Swedish Transport Administration (2014)

12



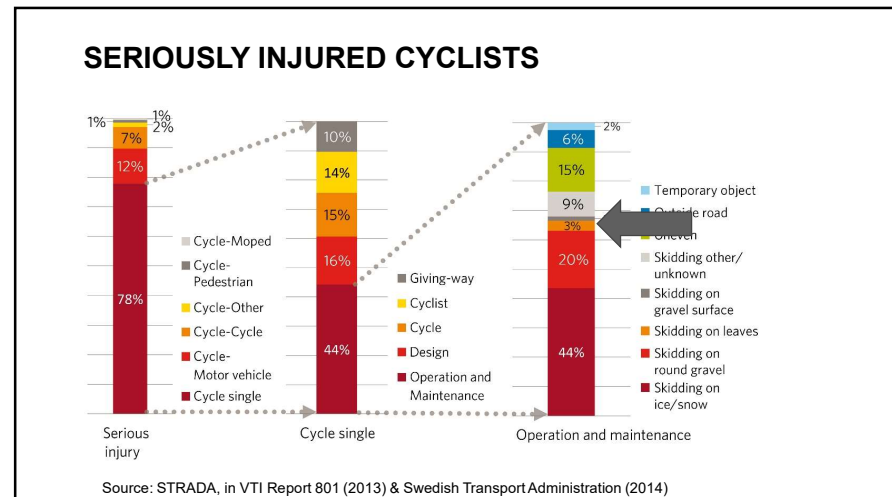
13



14



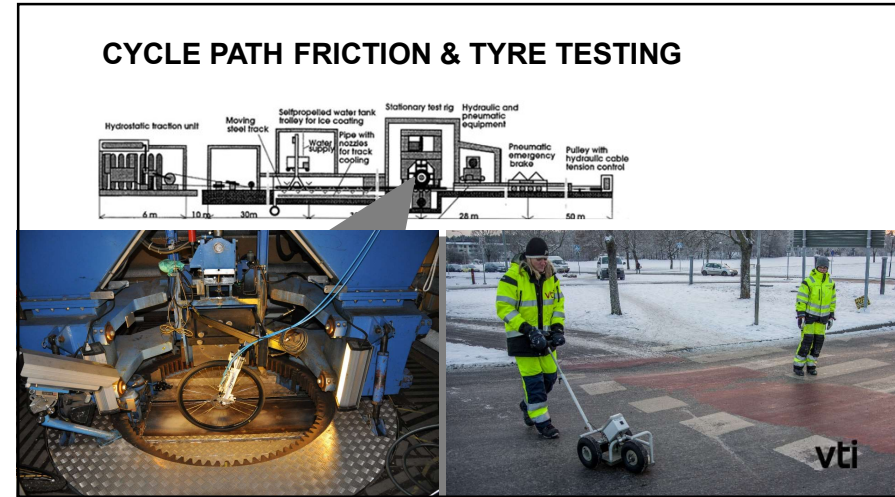
15



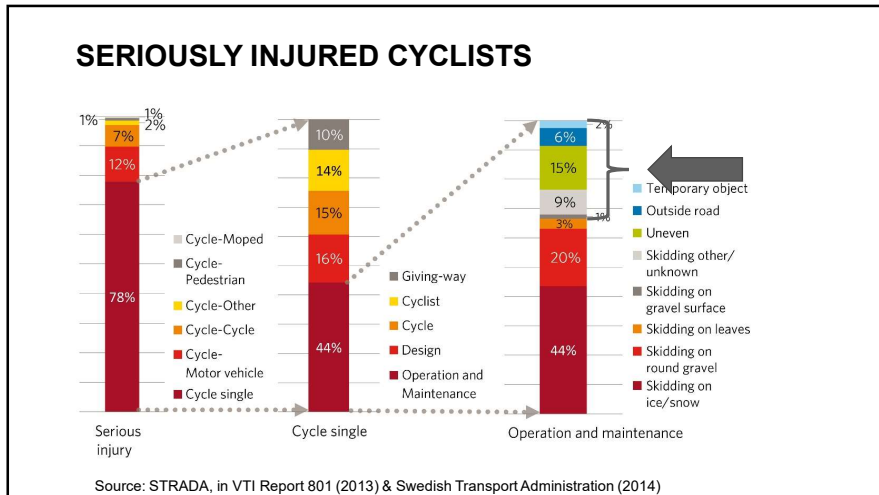
16



17



18



19



20

ROAD WORKS



21

TEMPORARY TRAFFIC CONTROL DEVICES FOR CYCLISTS



Photo: Jones Karlström, Stockholm

22

SIMULATED SBCs – TEMPORARY TRAFFIC CONTROL DEVICES

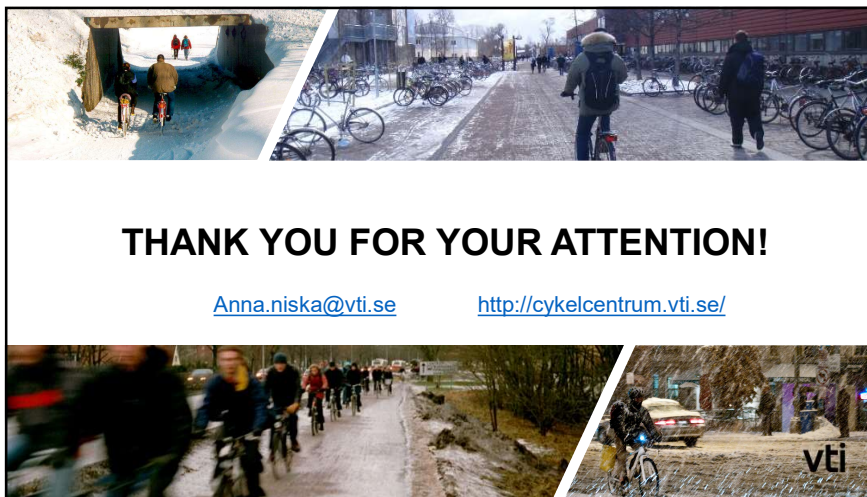


23

THANK YOU FOR YOUR ATTENTION!

Anna.niska@vti.se

<http://cykelcentrum.vti.se/>



24